

**A RESOLUTION OF THE BOARD OF COMMISSIONERS OF NEWTON COUNTY
GEORGIA AUTHORIZING THE SPLOST-FUNDED CONSTRUCTION OF
RECREATION FACILITIES AT DINAH PACE PARK AND VICTORIA
STATION PARK**

WHEREAS, Article 3 of Chapter 8 of Title 48 of the Official Code of Georgia Annotated, as amended (the "Act"), authorizes the imposition of a one percent County Special Purpose Local Option Sales Tax ("SPLOST") for purposes of financing capital outlay projects for the use and benefit of the County and qualified municipalities within the County; and

WHEREAS, on March 15, 2011, the voters approved a referendum to impose a special one (1) percent sales and use tax in Newton County for a period of time not to exceed six years and for the raising of an estimated amount of \$57,600,000 for specified projects ("SPLOST 2011"); and

WHEREAS, one of the projects approved by the voters was the allocation of \$500,000 of SPLOST funds for recreation facilities in Commissioner/Board of Education District 4; and

WHEREAS, on May 6, 2014, the Board of Commissioners approved a plan for expenditure of District 4 recreation facility funds; and

WHEREAS, on March 1, 2016, Commissioner J.C. Henderson presented the Board of Commissioners with a proposed revised and updated plan for the expenditure of the remaining District 4 recreation facility funds; and

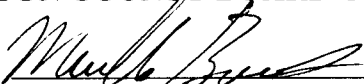
WHEREAS, the Board of Commissioners now desires to further revise and update the plan and to specifically authorize the expenditure of SPLOST 2011 funds for the creation of certain recreation facilities in District 4.

NOW THEREFORE BE IT RESOLVED by the Board of Commissioners, Newton County, Georgia, that:

1. Expenditure of \$77,000 in SPLOST 2011 District 4 recreation funds is authorized for recreation facilities at Dinah Pace Neighborhood Park and Victoria Station Pocket Park in accordance with the plans attached hereto as Exhibits A and B.
2. Expenditure of the balance of the SPLOST 2011 recreation funds shall be on District 4 recreation projects previously identified by the Board of Commissioners.

SO RESOLVED, this 21st day of February, 2017.

NEWTON COUNTY BOARD OF COMMISSIONERS

By: 
Marcello Banes, Chairman

Attest: 
Jackie Smith, County Clerk



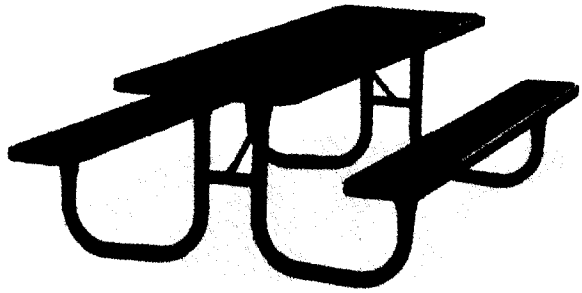
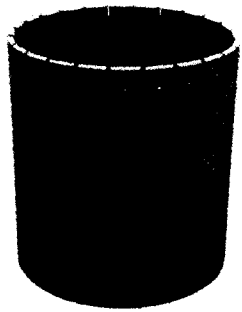
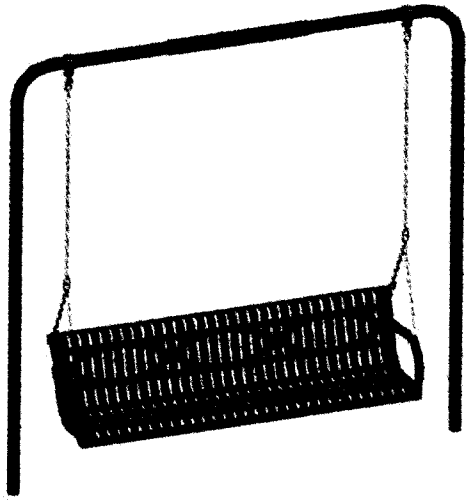
Exhibit A

Dinah Pace Neighborhood Park
 2016 District Four SPLOST Recreation Project



Amenities

Pavilion	20x40	\$22,500
Picnic tables	6 @ \$700	4,200
Grill	1 Large (Double grill)	500
Waste Receptacles	2 @ \$400	800
(2) Swinging Benches	2 @ \$1500 installed	3,000
Accessible 5'wide sidewalk from parking to pavilion and from pavilion to church		3,000
<u>SUB-TOTAL</u>		<u>\$34,000</u>



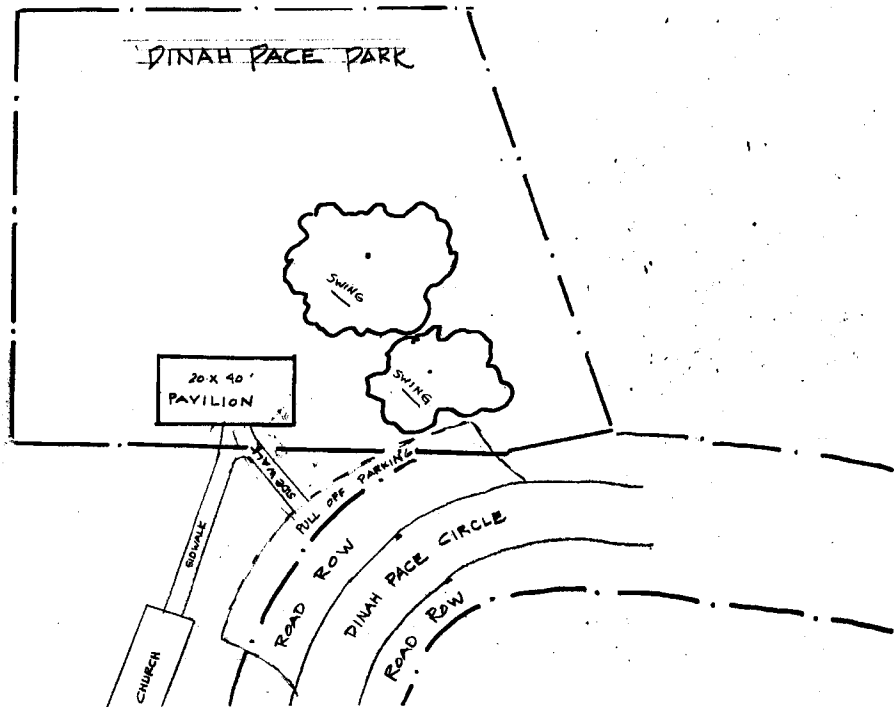
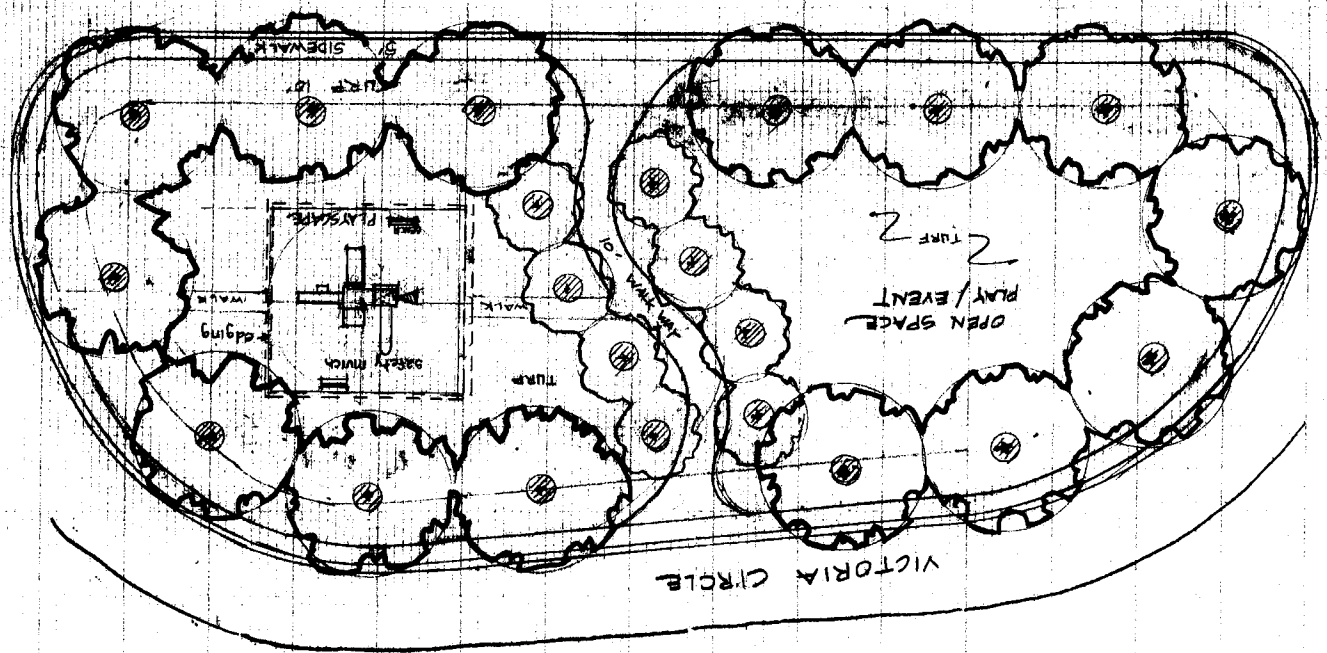


Exhibit B



Victoria Station Pocket Park Project Budget

2011 SPLOST District 4 Recreation Accrual - \$142,310 as of January 2017

POCKET PARK AMENITIES / Cost Estimates

Play Equipment \$20,000 max

(includes 2 benches) see attached examples

Safety Mulch installed \$ 4,000

50x50=2500 SFx13" deep loose (10") compacted = 100 cubic yards

(same as Lake Varner Project - Cowart Mulch or XGrass)

Edging for mulch \$ 2000

(2) additional Benches @ \$600 \$ 1200

Waste Receptacle x2 \$ 1400

(4) Street Trees installed (357ea) \$ 5,000

(8) interior trees 15 Gallon

or equal @ \$ 250

\$ 2000

Concrete Walkways:

5' Street Sidewalks surrounding island-800 LF x 5' wide x 4"(.333) thick = 1332 CF/27 = 49.3 CY x \$95/CY = \$4,686, say: \$5,000

10' wide cross walk for tricycles etc. x 120 LF=1,200 x 4" thick = 300CF/27= 11CY x \$95 say = \$1200

5' wide cross walk to playground x 90' x4" thick = 148CF/27+5.5CYx\$95 = \$522 say: \$ 550

Use existing turf

Total

NOT TO EXCEED \$43,000

\$42,350

The county will request for bid what can be supplied for the allowance available. The qualified bid with the most for the budget will win the award.



Victoria Station Examples of Amenities
Exact items will be determined by bid prices
and quality of products.

